

# ARDEN P.U.D. PLAT 1

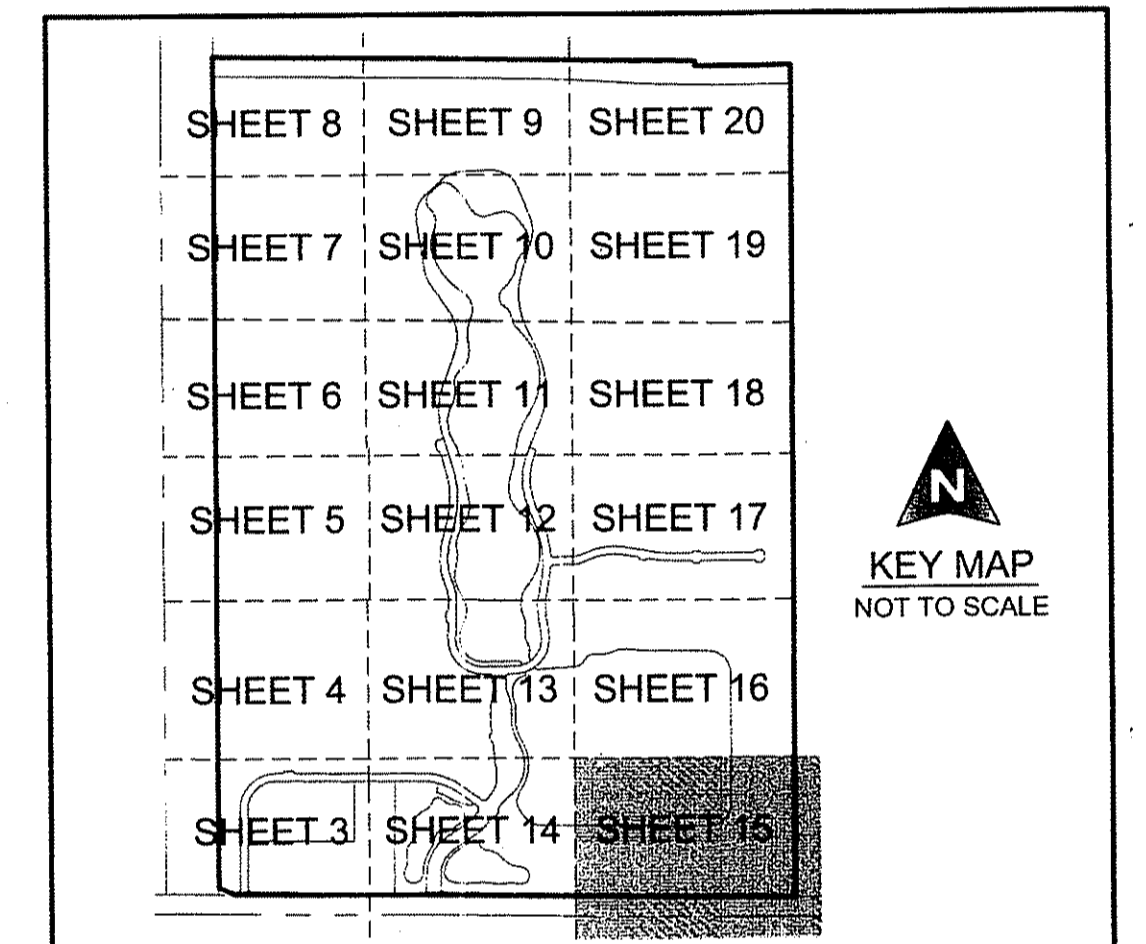
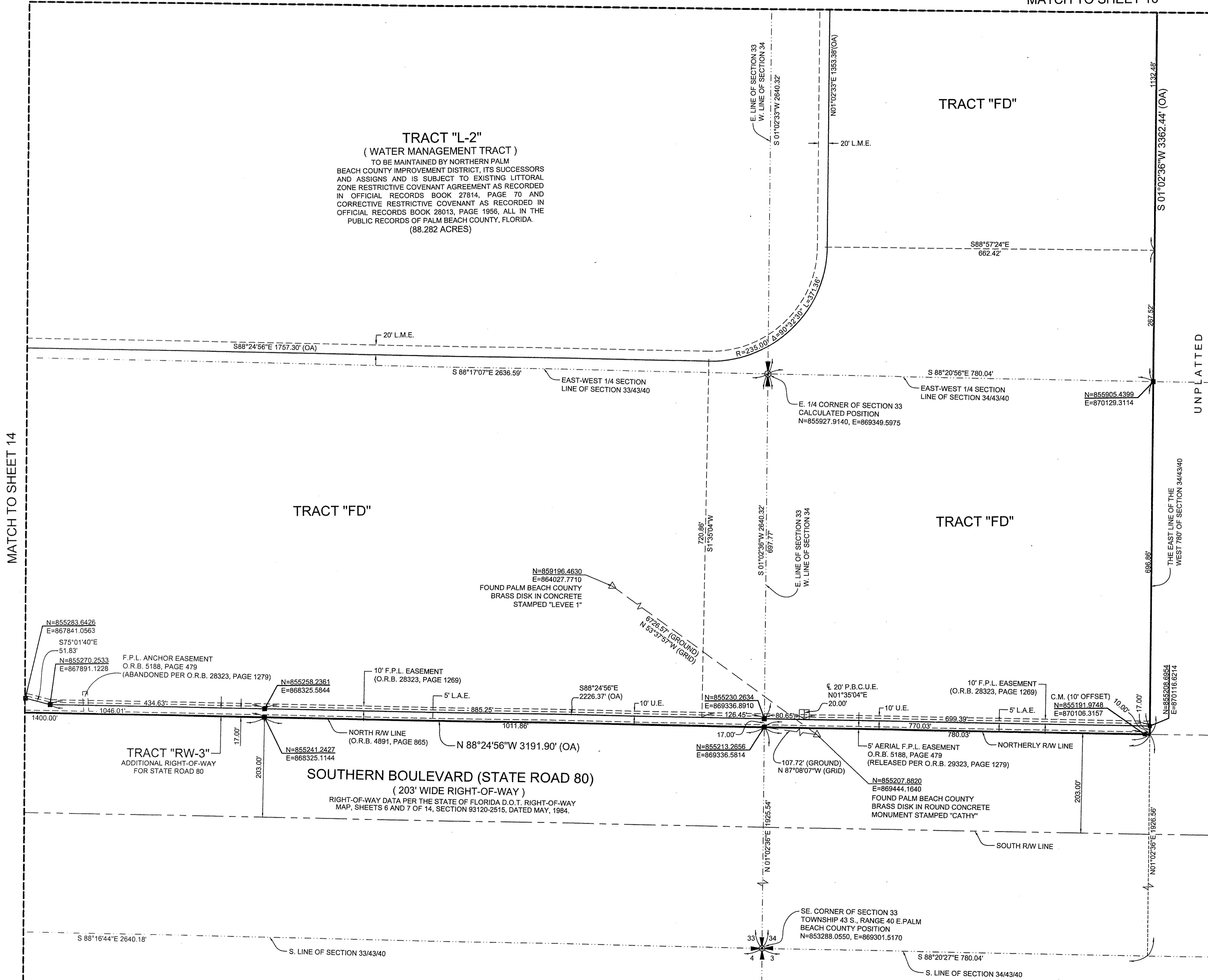
BEING A PARCEL OF LAND, LYING IN SECTIONS 21, 22, 27, 28, 33 AND 34,  
TOWNSHIP 43 SOUTH, RANGE 40 EAST, PALM BEACH COUNTY, FLORIDA.  
SHEET 15 OF 20

46

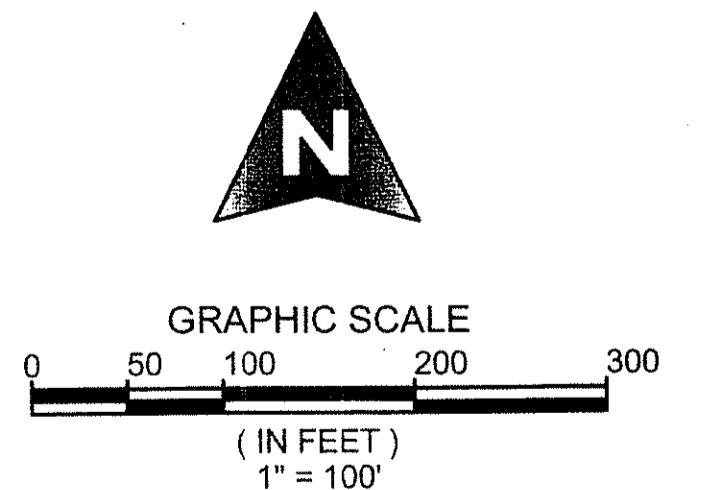
COUNTY OF PALM BEACH )  
STATE OF FLORIDA ) SS  
THIS PLAT WAS FILED FOR RECORD AT  
M. THIS DAY OF  
2016, AND DULY  
RECORDED IN PLAT BOOK NO. \_\_\_\_\_  
ON PAGE \_\_\_\_\_ THRU \_\_\_\_\_  
SHARON R. BOCK,  
CLERK AND COMPTROLLER  
BY: \_\_\_\_\_ D.C.

MATCH TO SHEET 16

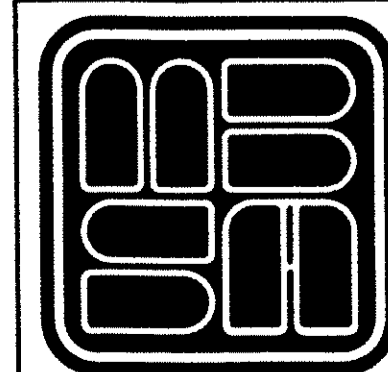
MATCH TO SHEET 16



**COORDINATE NOTE:**  
STATE PLANE COORDINATES SHOWN ARE GRID DATUM, NAD 83 1990 ADJUSTMENT, FLORIDA EAST ZONE, COORDINATE SYSTEM 1983 STATE PLANE TRANSVERSE MERCATOR PROJECTION  
LINEAR UNIT = US SURVEY FEET  
ALL DISTANCES ARE GROUND  
SCALE FACTOR = 0.99999219  
GROUND DISTANCE X SCALE FACTOR = GRID DISTANCE  
BEARINGS AS SHOWN HEREON ARE GRID DATUM, NAD 83 1990 ADJUSTMENT, FLORIDA EAST ZONE.



SHEET 15 OF 20



**MICHAEL B. SCHORAH & ASSOCIATES, INC.**  
1850 FOREST HILL BLVD., SUITE 206  
WEST PALM BEACH, FLORIDA 33406  
EB# 2438 TEL. (561) 968-0080 FAX. (561) 642-9726 LBP# 2438

**ARDEN P.U.D. PLAT 1**